



Meet. Play. Celebrate.

Physical Address - Auditorium
Amarillo Civic Center Complex
401 S. Buchanan
Amarillo, Texas 79101

Venue Contacts

Bo Fowlkes: General Manager
Bo.fowlkes@amarillo.gov Office Phone: 806-378-9460

Christopher Post: Asst. General Manager
Christopher.Post@amarillo.gov , Office: 806-378-9480

Derek Hisek – Production Manager
Derek.Hisek@amarillo.gov , Office: 806-378-3088, Cell: 605-695-6179

Mandy Smoot – Event Manager (FOH things)
Mandy.Smoot@amarillo.gov , Office: 806-378-9471, Event Cell (will be answered by Event Supervisor on duty) Event Cell: 806-654-1719

Han Owens – Box Office Manager
Han.owens@amarillo.gov , Office :806-378-6174

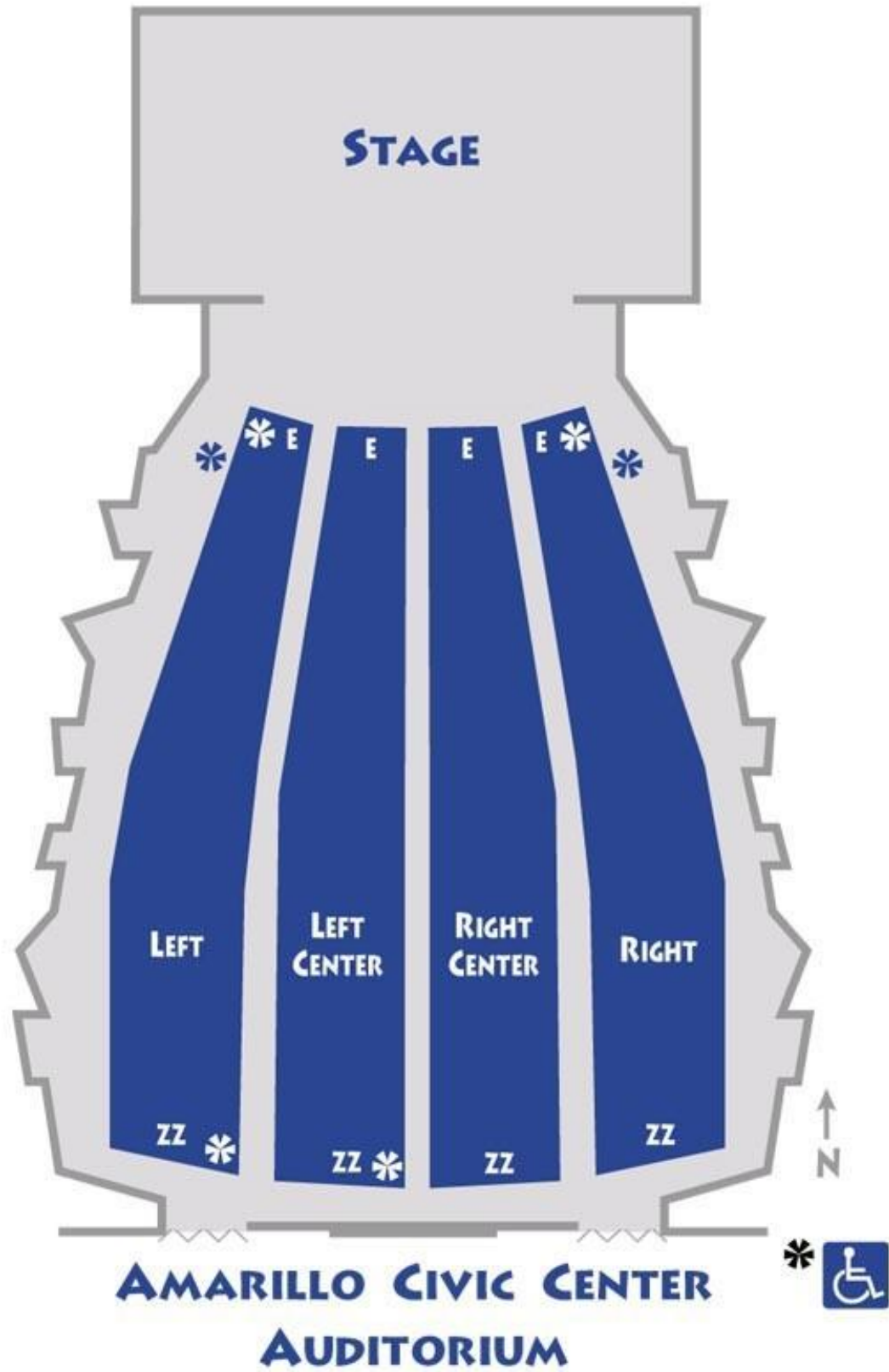
Maya Weatherholt - 1st Asst. Production Manager
Maya.Weatherholt@amarillo.gov , Office: 806-378-9346 Cell: 806-677-4193

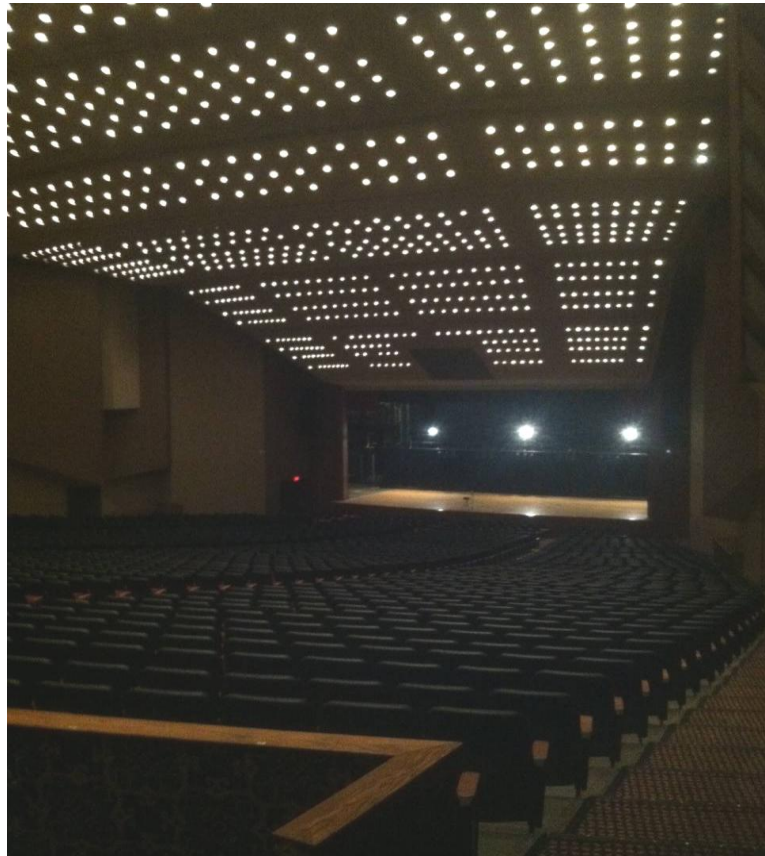
Kaleb Chamblee – 2nd Asst. Production Manager
Kaleb.Chamblee@amarillo.gov , Office: 806-378-4221 Cell: -806-223-7233

Ashley Jones – Marketing Administrator
Ashley.jones@amarillo.gov , Office:806-378-4246

COMPLEX MAP







The Amarillo Civic Center Complex Auditorium is a proscenium theatre with no balcony. The theatre seats 2,310 with an additional 72 seats available on the orchestra pit if the orchestra pit is not in use. The fly system features thirty-seven single purchase and five double purchase lines. There are also five motorized electrics and one manually operated Grand Drape with travel in both directions. There are seven dressing rooms of various sizes located off-stage left. Loading on to the stage is done via backing down a 6 degree down ramp through a 28' wide x 14'1" high overhead door. There is about a 20' push from the standard height loading dock to the stage floor.

The Auditorium has a VerTek 4886 line array system. In addition, a thirty-two-channel Midas M32 board and a 300' long, 40 channel; 8 buss audio snakes with a 75 foot monitor split is available for a fee. CD players, microphones, cables, microphone stands, and other audio/visual equipment are available on request. A Clear Com two channel headset system is in place, with jacks throughout the theatre and an HME wireless headset system that will interface with the system.

PRODUCTION CONTACTS

Derek Hisek
Production Manager
O:806-378-3088
Derek.Hisek@amarillo.gov

Maya Weatherholt
1st. Asst. Production Manager
O: 806-378-9346
Maya.weatherholt@amarillo.gov

Kaleb Chamblee
2nd Asst. Production Manager
O: 806-378-4221
Kaleb.Chamblee@amarillo.gov

Technical Specifications

Revised 10/07/2025

Please Note the Following

1. **No hang points house side of proscenium.**
2. **FOH snake run is minimum 275' along house right wall.**
3. **5 Electrics - Motorized (see line set) fly out to 37'**
4. **Semi tractor/trailer rigs with large cabs may have problems backing to the dock. Please allow extra time for backing on the move-in.**

STAGE MEASUREMENTS

Proscenium:	55' x 24'
Grand Drape to Back Wall	45' 02"
DSC to FOH Mix	167' 0"
Grid Height	65'
Batten Length	68'
Arbor Set Capacity	800 lbs (Total Distributed on Batten on Acoustic Panel Battens, 600 lbs on all other non-motorized battens.)
Note: For any moving pipes that require more than 400 lbs. of weight please contact the Amarillo Civic Center Complex Production Management Team.	
Fly Rail:	15' high off-stage right
Loading Galleries	2
Wing Space	SL 19' 02" SR 15' 04"
Stage Height from House Floor	3' 04"
Orchestra Pit Options	3' 01 3/4" Deep from house floor Cover to house floor
Overhead Stage Door (USL)	10' 02" Wide X 11' 02" High
Loading Dock Height	3' 10" (Truck Height)
Apron Down Stage of Grand Drape:	4'
Cross Over:	Hallway behind upstage wall
Stage floor Construction:	Blonde Colored Wood sprung floor.
1 – 9' Baldwin Concert Grand Available for rent.	

STAGE Curtains

Black Legs, 50% fullness, 5 sets – Each leg is 15' x 28'
 Black Borders, 50% Fullness, 4, Each Border is 10' x 67'
 Full Stage Black (Mid-stage), 50% Fullness – 28' x 70', (2 Panels) Also Functions as 4th Border
 Full Stage Black (Up-stage), 50% Fullness – 28' x 70', (2 Panels)
 Vinyl Cyc – 24' x 35' – Can be used as projection surface
 Scrim – 24' x 35' – Sharks tooth (White or Black)

LAGGING INTO THE STAGE FLOOR IS NOT ALLOWED!!!

UPPER AUDITORIUM DRESSING ROOMS

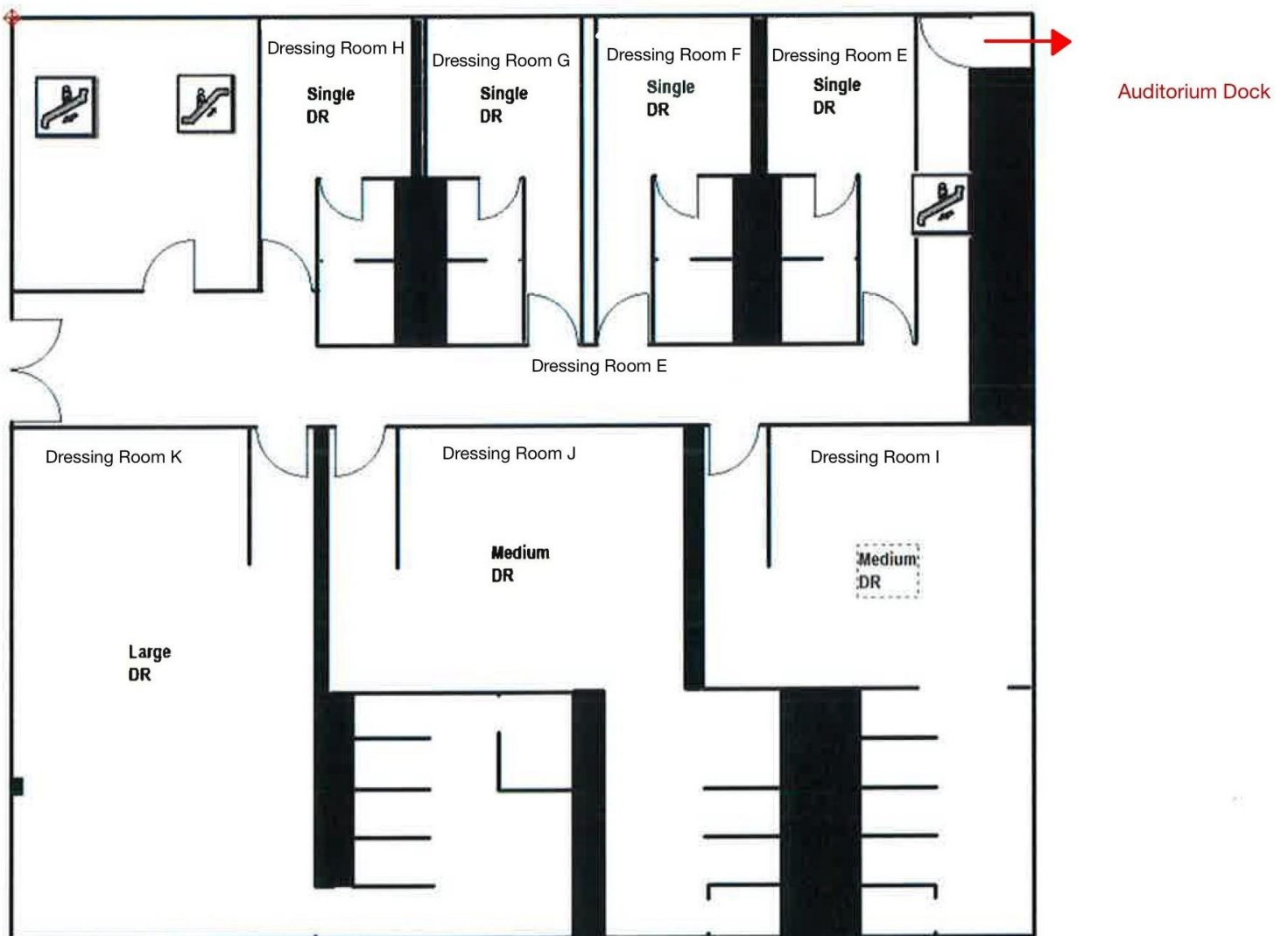
Upper level SL: 1 Large, 2 Medium, & 4 Small (all with toilets and showers)

Lower level SL: (available only by special permission when no events are in Coliseum)

2 Large Locker Rooms / 2 Small (toilets and showers)

All dressing rooms hall has Live (Unrecorded) monitors fed from touring sound console if needed, this can be tied in SL.

Diagram of the Auditorium Dressing Room Area



LOWER DRESSING ROOMS

(PLEASE BE ADVISED Dressing Room A & B are dedicated to the resident sports teams, those dressing room may or may not be available bases on teams schedule)

The Civic Center Coliseum has two (2) large dressing room areas and two (2) smaller single dressing rooms. All dressing rooms come equipped with toilets, lavatories, and shower facilities. All dressing rooms are equipped with one (1) television monitor for viewing the Coliseum show floor, or local basic cable.

The lower dressing room area also has a small production office, which can also be used as a quick-change room, and a larger Headliner Room available for various uses. Below you will see a diagram showing the area layout and the hallway the runs from the loading doors to the Coliseum Floor.

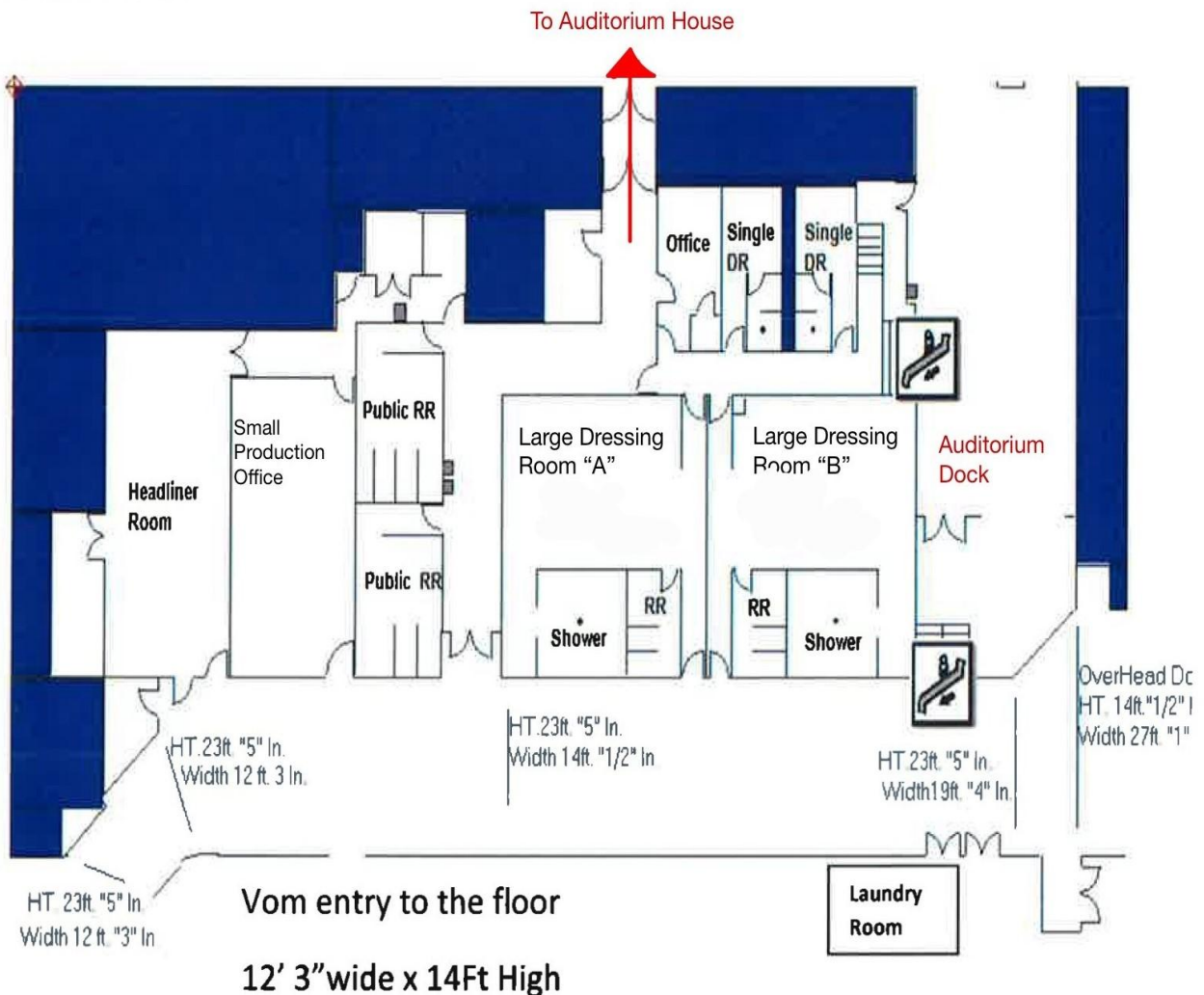


Diagram of the Lower Dressing Room Area

STAGE LIGHTING .

See lighting plan:

Lighting Control: ETC Ion – 2 Universes available (1024 Outputs).

Lighting Positions include, Ceiling Cove (AP) (40 circuits), 2 box booms (10 circuits each), 5 Motorized Electric Battens (35 circuits each), 5 Drop Downs SL & SR (6 Circuits each) 15 Floor packets (4 circuits each), 2 Wall Boxes (4 circuits each).

Please note there is NO FOH hand position for lighting.

Dimmer & House Lighting Inventory available on request. We are a conventional house, with a few LED wash instruments available, we do not have moving lights.

Follow Spots:

Four 2000 W. Xenon Super Troupers. House option of no more than 4 spots in the booth. (Gel available upon request)

Additional Show Power:

2 – 600 amp (3 phase)

Bare Ends or 6 – 0 Camlock

Down Stage Left

1 – 200amp (3 phase)

Cam lock (Only) – isolated Ground

Down Stage Right – SOUND power

*Please inform Production if you have reversed Ground and Neutral

Audio: PA Array system – Maxes out at 95 dB

Permanently hung outside the proscenium, cannot be removed.

Vertek 4887 Line Array System

Array Sub: 4883

Crown Micro Tech Amps

Speaker Array:

2 top subs / 8 full range speakers per side, tuned and aimed to fill entire house area.

– Flown out of sight line in front of Proscenium.

In addition:

4 – Front fill speakers can be set on request

6 – (Unmatched) stage (performer) monitors, that can be set on request.

The Drive Rack for this system is tuned and locked by JBL. NO MODIFACATION of the system and its components is allowed in any way.

Backstage Communication

Version 11.12.25

Clear Com two (2) channel wired headset system in place. HME wireless headset system available and will interface with Clear Com system.

Crew Rates:

Up Riggers \$37.00 per hour 4 hour minimum

Down Riggers \$37.00 per hour 4 hour minimum

Crew Chief \$22.50 per hour

Runner (s) Please check rates with Venue, vehicle rental maybe needed for your event.

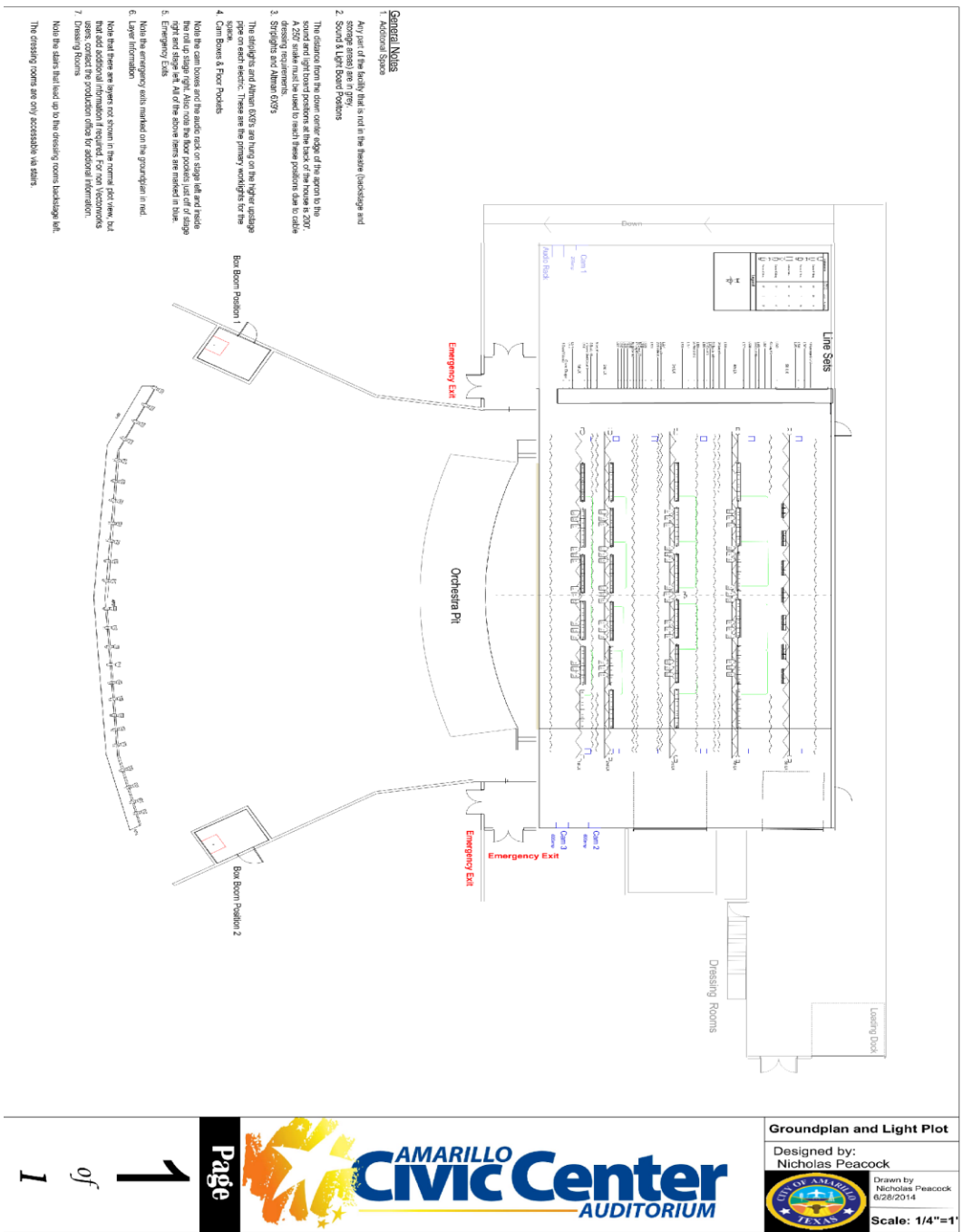
Stagehands: \$17.00 per hour 4-hour minimum

Crew Lead /Dept. Heads \$19.00 4 Hr. minimum.

All labor calls that extend over 8 hours in a 24-hour day will be billed out at an overtime rate of time and a half.

Full time production staff will change shifts between load in and show.

Stage Layout



House Patch Available upon request

Auditorium Line Set

Lineset	Distance From		Stg. Wgt. Size	House Hang	House Goods Weight	Max Capacity
	Grand	Fire Curtain				
1	-4	3"	30 lbs	Grand Valance Grand Drape	240 lbs	620 lbs
2	0"	7"	Isolated			
3	2' 0"	2' 6"	20 lbs			
4	2' 6"	3' 0"	20 lbs			
5 1st Elec	DS: 3' 0" US: 4' 0"	DS: 3' 6" US: 4' 6"	N/A	1st Motorized Electric	N/A	2500 lbs
6	4' 6"	5' 0"	20 lbs	Orch Shell Cloud 1 1st Border 1st Leg	450 lbs 140 lbs 160 lbs	620 lbs 620 lbs 620 lbs 620 lbs
7	5' 0"	5' 6"	20 lbs			
8	5' 6"	6' 0"	20 lbs			
9	6' 6"	7' 0"	20lbs			
10 2nd Elec	DS: 8' 0" US: 9' 0"	DS: 8' 6" US: 9' 6"	N/A	2nd Motorized Electric	N/A	2500 lbs
11	10' 0"	10' 6"	20 lbs	2nd Border 2nd Leg Orch Shell Cloud 2	140 lbs 160 lbs 820 lbs	620 lbs 620 lbs 620 lbs 620 lbs 620 lbs 620 lbs 620 lbs 1300 lbs 620 lbs
12	10' 6"	11' 0"	20 lbs			
13	11' 0"	11' 6"	20 lbs			
14	11' 6"	12' 0"	20 lbs			
15	12' 0"	12' 6"	20 lbs			
16	12' 6"	13' 0"	20 lbs			
17	13' 0"	13' 6"	20 lbs			
18	13' 6"	14' 0"	30 lbs			
19	14' 0"	14' 6"	20 lbs			

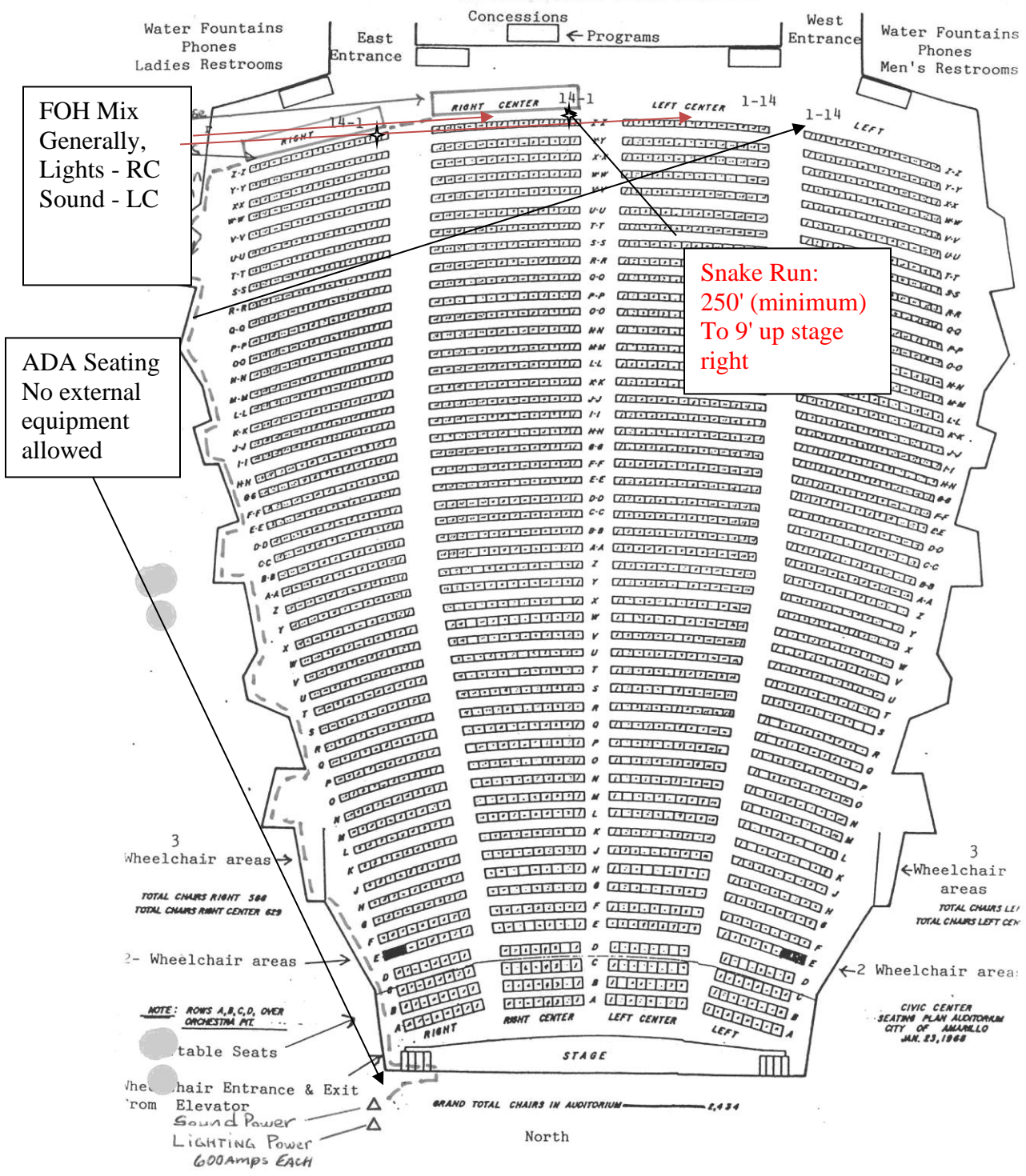
Version 11.12.25

20	14' 6"	15' 0"	20 lbs			620 lbs		
21	15' 6"	16' 0"	20 lbs					
22	16' 6"	17' 0"	20 lbs	3rd Border 3rd Leg	140	620lbs		
23	17' 0"	17' 6"	20 lbs		160	620 lbs		
24	17' 6"	18' 0"	20 lbs					
25 3rd Elec	DS: 18' 6" US: 19' 6"	DS: 19' 0" US: 20' 0"	N/A		3rd Motorized Electric	N/A	2500 lbs	
26	20' 6"	21' 0"	30 lbs	Mid Stage Black- Out (Not Traveler)	Curtain: 330lbs Track: 240lbs	1300lbs		
27	21' 6"	22' 0"	30 lbs			1300 lbs		
28	22' 6"	23' 0"	30 lbs			1300 lbs		
29	23' 0"	23' 6"	20 lbs			620 lbs		
30	24' 0"	24' 6"	20 lbs	Orch Shell Cloud 3	720 lbs	1300 lbs		
31	24' 6"	25' 0"	30 lbs			4th Border	140 lbs	620 lbs
32	25' 0"	25' 6"	20 lbs					4th Leg
33	25' 6"	26' 0"	20 lbs					
34	26' 6"	27' 0"	30 lbs					
35	27' 6"	28' 0"	20 lbs					
Lineset	Distance From Grand Fire Curtain		Stg. Wgt. Size	House Hang	House Goods Weight	Max Capacity		

Version 11.12.25

36 4th Elec	DS: 28' 6" US: 29' 6"	DS: 29' 0" US: 30' 0"	N/A	4th Motorized Electric	N/A	2500 lbs
37	30' 6"	31' 0"	30 lbs			
38	31' 6"	32' 0"	30 lbs			
39	32' 6"	33' 0"	30 lbs	Orch Shell Cloud 4	330 lbs	1300 lbs
40	33' 0"	33' 6"	20 lbs			
41	34' 0"	34' 6"	20 lbs			
42	35' 0"	35' 6"	20 lbs	5th Leg	160 lbs	620 lbs
43	36' 0"	36' 0"	50 lbs			DbI Purchase
44 5th Elec	37' 2"	37' 8"	N/A	5th Motorized Electric	N/A	2500 lbs
	Single Baton					
45	39' 0"	39' 6"	20 lbs			DbI Purchase
46	39' 6"	40' 0"	50 lbs			DbI Purchase
47	40' 6"	41' 0"	50 lbs	US Full Black	660 lbs	DbI Purchase
48	41' 6"	42' 0"	50 lbs	Vinyl Cyc (55' x 24')	300 lbs	DbI Purchase

House Floor Plan



FOH Mix
Generally,
Lights - RC
Sound - LC

ADA Seating
No external
equipment
allowed

Snake Run:
250' (minimum)
To 9' up stage
right

3
Wheelchair areas
TOTAL CHAIRS RIGHT 588
TOTAL CHAIRS RIGHT CENTER 629

2- Wheelchair areas

NOTE: ROWS A,B,C,D, OVER
ORCHESTRA PIT

table Seats
Wheelchair Entrance & Exit
from Elevator
Sound Power
LIGHTING Power
600amps EACH

3
Wheelchair areas
TOTAL CHAIRS LEFT
TOTAL CHAIRS LEFT CENTER

2 Wheelchair areas

CIVIC CENTER
SEATING PLAN AUDITORIUM
CITY OF ANCHORAGE
JAN. 23, 1968

GRAND TOTAL CHAIRS IN AUDITORIUM 2,434

North