



*Meet. Play. Celebrate.*

**Physical Address – Coliseum**

**Amarillo Civic Center Complex**

**401 S. Buchanan**

**Amarillo, Texas 79101**

**Venue Contacts**

**Bo Fowlkes:** General Manager

[Bo.fowlkes@amarillo.gov](mailto:Bo.fowlkes@amarillo.gov) Office Phone: 806-378-9460

**Christopher Post:** Asst. General Manager

[Christopher.Post@amarillo.gov](mailto:Christopher.Post@amarillo.gov) , Office: 806-378-9480

**Derek Hisek** – Production Manager

[Derek.Hisek@amarillo.gov](mailto:Derek.Hisek@amarillo.gov) , Office: 806-378-3088, Cell: 605-695-6179

**Mandy Smoot** – Event Manager (FOH things)

[Mandy.smoot@amarillo.gov](mailto:Mandy.smoot@amarillo.gov) , Office: 806-378-9471, Event Cell (will be answered by Event Supervisor on duty) EC: 806-654-1719

**Han Owens** – Box Office Manager

[Han.owens@amarillo.gov](mailto:Han.owens@amarillo.gov) , Office :806-378-6174

**Maya Weatherholt** - 1<sup>st</sup> Asst. Production Manager

[Maya.Weatherholt@amarillo.gov](mailto:Maya.Weatherholt@amarillo.gov) , Office: 806-378-9346 Cell: 806-677-4193

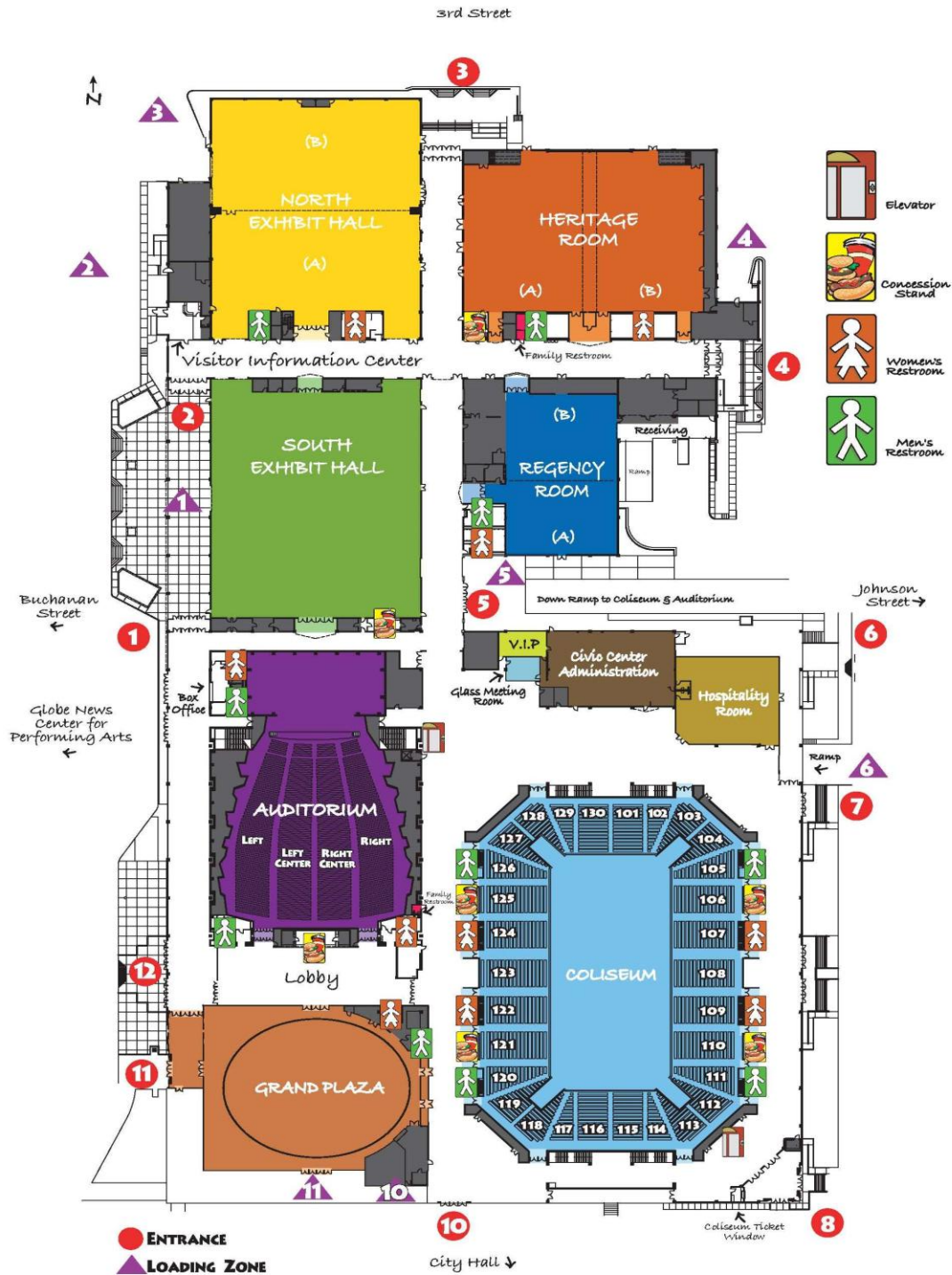
**Kaleb Chamblee** – 2<sup>nd</sup> Asst. Production Manager

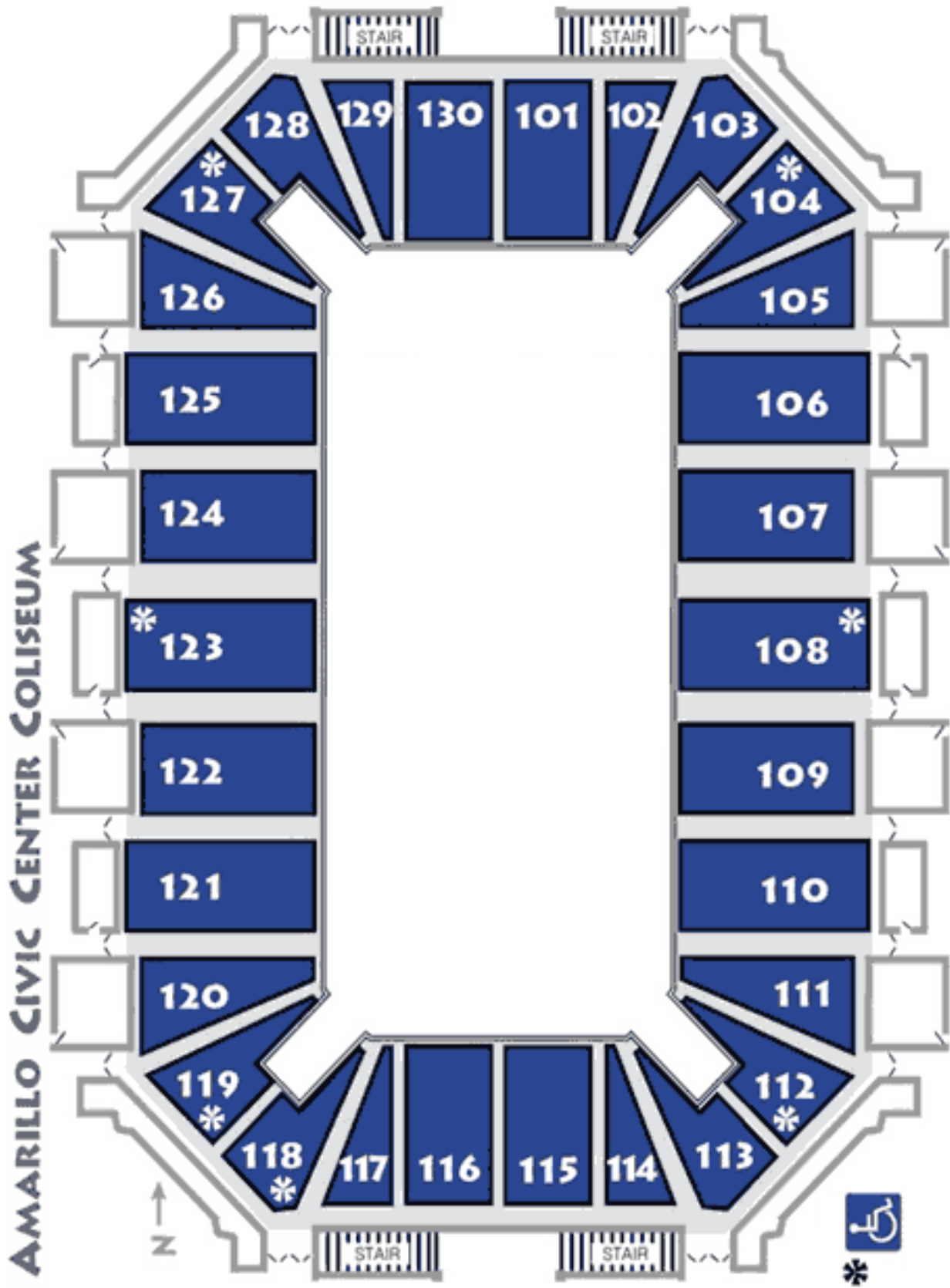
[Kaleb.Chamblee@amarillo.gov](mailto:Kaleb.Chamblee@amarillo.gov) , Office: 806-378-4221 Cell: -806-223-7233

**Ashley Jones** – Marketing Administrator

[Ashley.jones@amarillo.gov](mailto:Ashley.jones@amarillo.gov) , Office:806-378-4246

# COMPLEX MAP







The Amarillo Civic Center Complex Coliseum was **constructed in 1968** as the largest venue inside the Amarillo Civic Center Complex. The bowl seats 4,826 with an additional 50 accessible seats available, and another 1800 possible capacity on the floor. The Coliseum can host a wide variety of events including floor conversions from standard concrete, dirt, ice rink, arena turf, and basketball floor. The Coliseum is surrounded by a full-service concourse with (6) six concession stands and (4) main entrances. Spacious concourses on all sides offer an ample amount of vendor space for trade shows, concerts, sporting events, and much more. Room height from floor to ceiling is 50' 10" with 38'10" of open space from the floor to the lower steel. Underground ramp access to the Coliseum is available on the east side of the facility.

The Amarillo Civic Center Complex Coliseum resides in the heart of downtown Amarillo.

**PLEASE READ ALL DETAILS WITHIN THIS DOCUMENTS TO HAVE A COMPLETE UNDERSTANDING OF THIS VENUE.**

**Amarillo Civic Center Coliseum**  
**Technical Specifications**  
Revised 8.14.24

**General Information**

FLOOR DIMENSIONS: 90' x 190'

LOW STEEL HEIGHT: 38' 10" From floor

HIGH STEEL HEIGHT: 50' 10" From floor

BETWEEN STEEL (North to South): 47'

HOUSE SPEAKERS: All speakers are above the low steel.

Z-BAR: Runs North to South between steel @ 50' from floor.

**RIGGING: Please be aware that the Coliseum venue was constructed in 1968 and unfortunately does not have many of the modern amenities found in most arenas. There are a limited number of dead hang points and most or all points require bridle rigging. This can be time consuming and affect load-in times. Please be sure to speak with a member of our Production management team regarding how your hang will need to be adjusted to fit this venue. Steel and ceiling details are listed on page 2 and page 8 of the technical pack. Please review this information carefully.**

CATERING AREA: Upstage Right just off NW hallway, labeled as the HEADLINER ROOM

PRODUCTION OFFICE: Upstage Right just off NW hallway, next to the HEADLINER ROOM

DRESSING ROOMS: Upstage Right along NW hallway.

ACCESS TO FLOOR: Through vomitory on Northwest corner of Coliseum, down a 200' hallway. Vomitory entrance to the Coliseum floor listed in the hallway diagram in the tech packet.

INTERCOM SYSTEM: throughout Coliseum. Clear Com 2-channel headset system

POWER AVAILABLE:

4 -400 AMP Three Phase -25' from upstage right (NW corner of Coliseum)

1 -200 AMP Three Phase -25' from upstage right (NW corner of Coliseum)

All Above – 4.0 Cam Lock hook-ups.

1-100 AMP Three Phase –25' from upstage right (Must be run under roll-up door)

Bare Tail Tie – In.

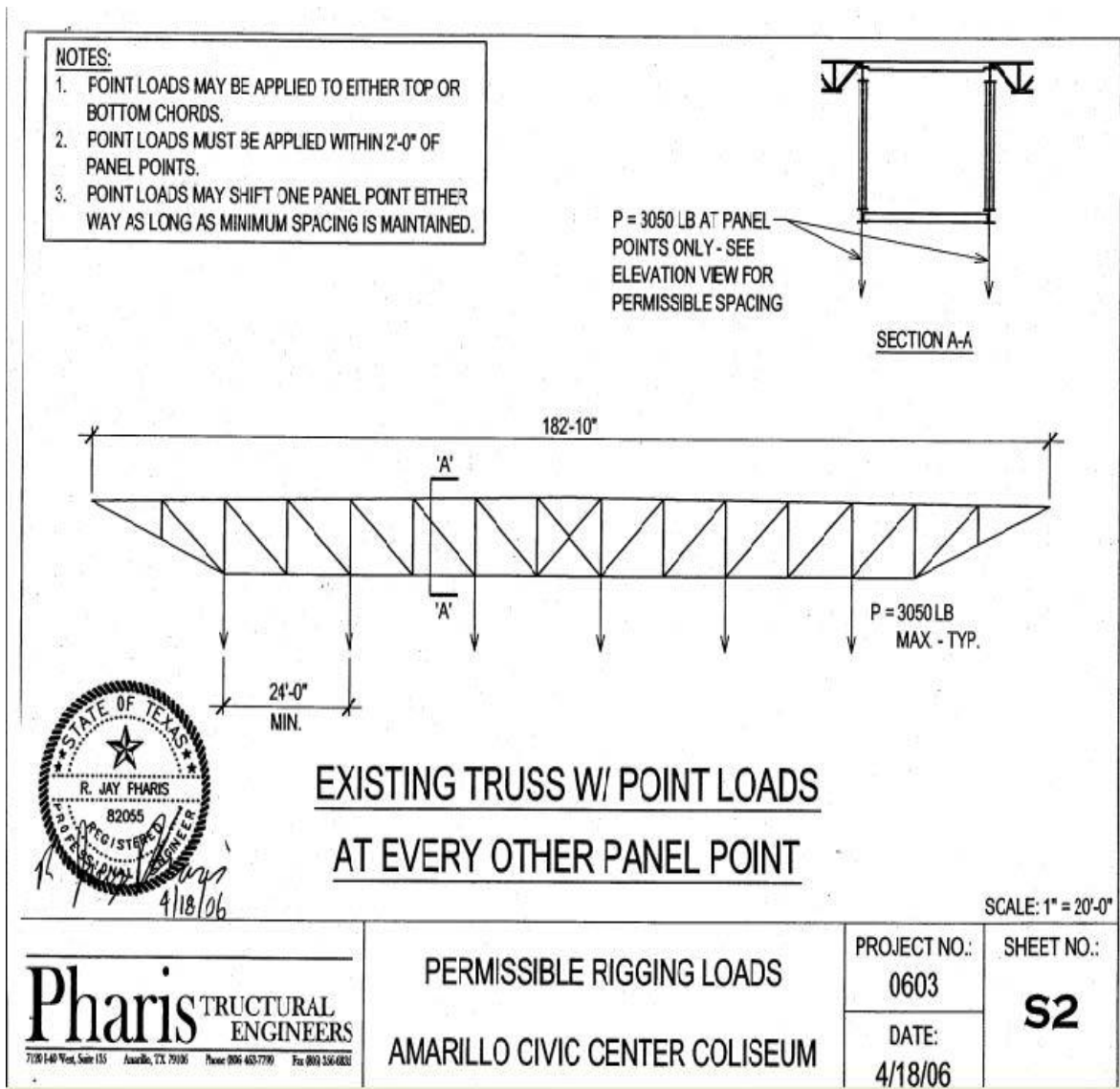
1 -600 AMP THREE PHASE -200' from downstage right (SW corner of Coliseum)

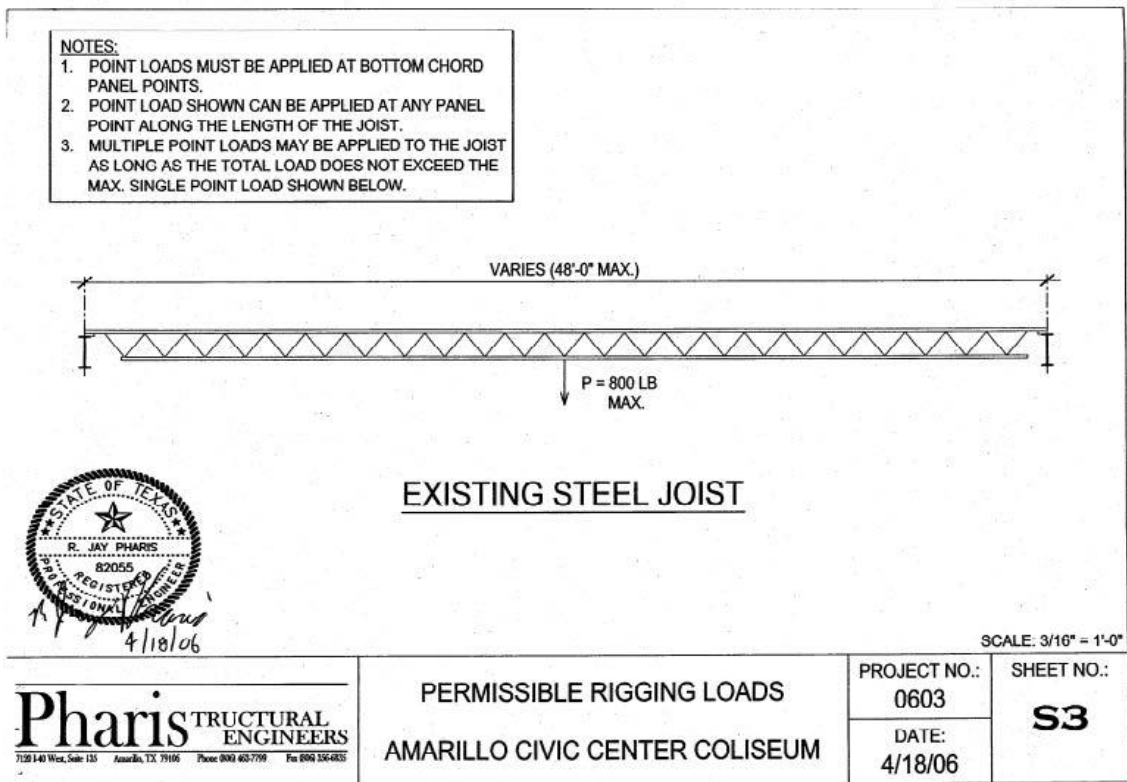
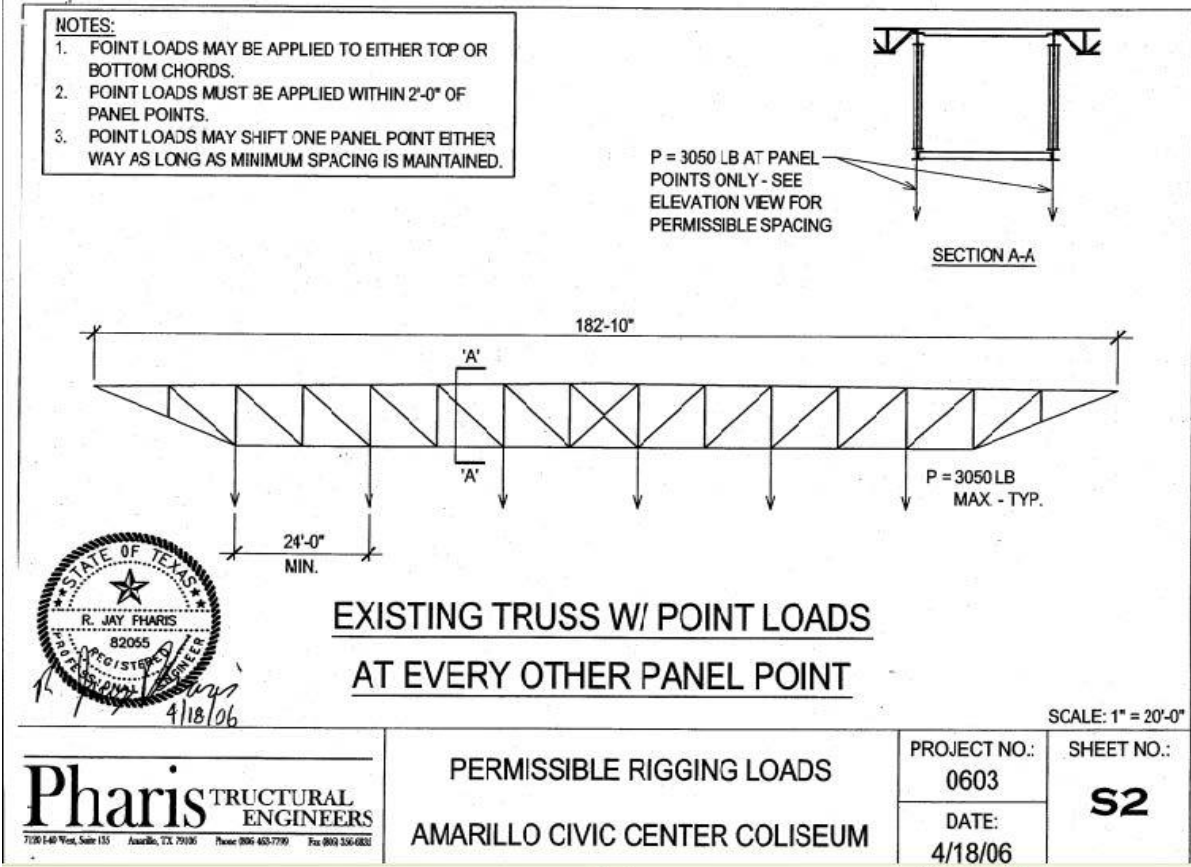
Bare Tail Tie – In.

### Structural Steel Load Limits

- 3063 lbs. per bridle, main steel to main steel 1500 lbs. per point dead hung from main steel
- 800 lbs. maximum load per Z-Bar
- 20 lbs. per square foot roof live load
- 12 lbs. per square foot roof safe load

**Structural drawings showing all permissible rigging loads are shown below. An updated structural survey was conducted by Pharis Structural Engineers on 9/21/2022 and certified no deficiencies in the Coliseum rigging structure and verified all loads are accurate.**





## **Lighting**

### **HOUSE LIGHTS:**

LED lighting for the entire coliseum

Lighting is not dimmable, but various sections can be switched on and off as needed.

Control is on the Upper Concourse, on the same level with follow spots.

### **FOLLOW SPOTS:**

6 -Xenon Super Trooper 2000 watt

## **Coliseum Floor**

**CONCRETE LAGGING:** **Absolutely NO lagging** is allowed on Coliseum floor due to underlying ice floor pipes.

**LOADING:** The load in/out point for the Coliseum area is located on east side of the Facility at entrance #5. The load in point is a 196-foot-long incline ramp that can accommodate up to two (2) tractor trailer trucks at a time. Items must be off loaded by forklift or ramp (event provided) and pushed 216 feet to the coliseum floor. Hallway and height dimensions can be seen in the Dressing Room diagram also listed in this tech pack.

**ICE FLOOR COVERING:** When necessary, the ice surface can be covered with Polar Floor to accommodate other events. Please check with the Production Manager if you have any questions.

**STAGING:** **Stage right** portable stage constructed in 4' x 8' sections. Deck finish is interchangeable between carpeted, and poly surfaced Customary stage height is 48" – 60". Dimension capability is 4'x8' up to 60'W x 48'D with the ability to add a 8' x 24' thrust.

**SCOREBOARD & GRAPHIC DISPLAYS:** The Coliseum is equipped with a scoreboard, graphic message display board, and dual penalty clocks, on both the north and south ends of the room. The boards are permanently fixed in position at the upper concourse level, just over the seating areas. Scoreboard and Display features are as follows.

#### Scoreboards

- 14 feet wide x 6 feet 10 inches tall.
- Double digit **Home** and **Guest** score counters.
- (4) period/quarter indicator lights.
- Interchangeable lower panels for specific Hockey, Football, or Basketball information.
- Scoreboard controller is a Daktronics All Sports series 5000 console controller.

### Message Displays

- Message Board Dimensions are approximately 14 feet wide x 6 feet 10 inches tall.
- Boards are Daktronics LED 10mil Video Boards 512 pixels wide by 288 pixels down
- DMP 8000 Daktronics player / processor
- Displays can support 1080dpi

The Amarillo Civic Center Complex **does not** create the images for these displays. All display images are the responsibility of the client and are required to be submitted (5) days prior to an event.

Technical services are required to run any images on the display boards during an event. Standard rates will apply.

### **Sound**

AUDIO SYSTEM: In-house audio system available upon request. Center Technician required.

Audio system consists of:

**Console:** Midas M32

**Amplification:** (9) QSC CX12 600W amplifiers

(1) 600W QSC amplifier (subs)

**Speakers:** (12) EV FRX-940 full range speakers evenly dispersed to cover grand stands

(12) EV PI Matrix Full range speakers evenly dispersed directly over floor for floor seating coverage

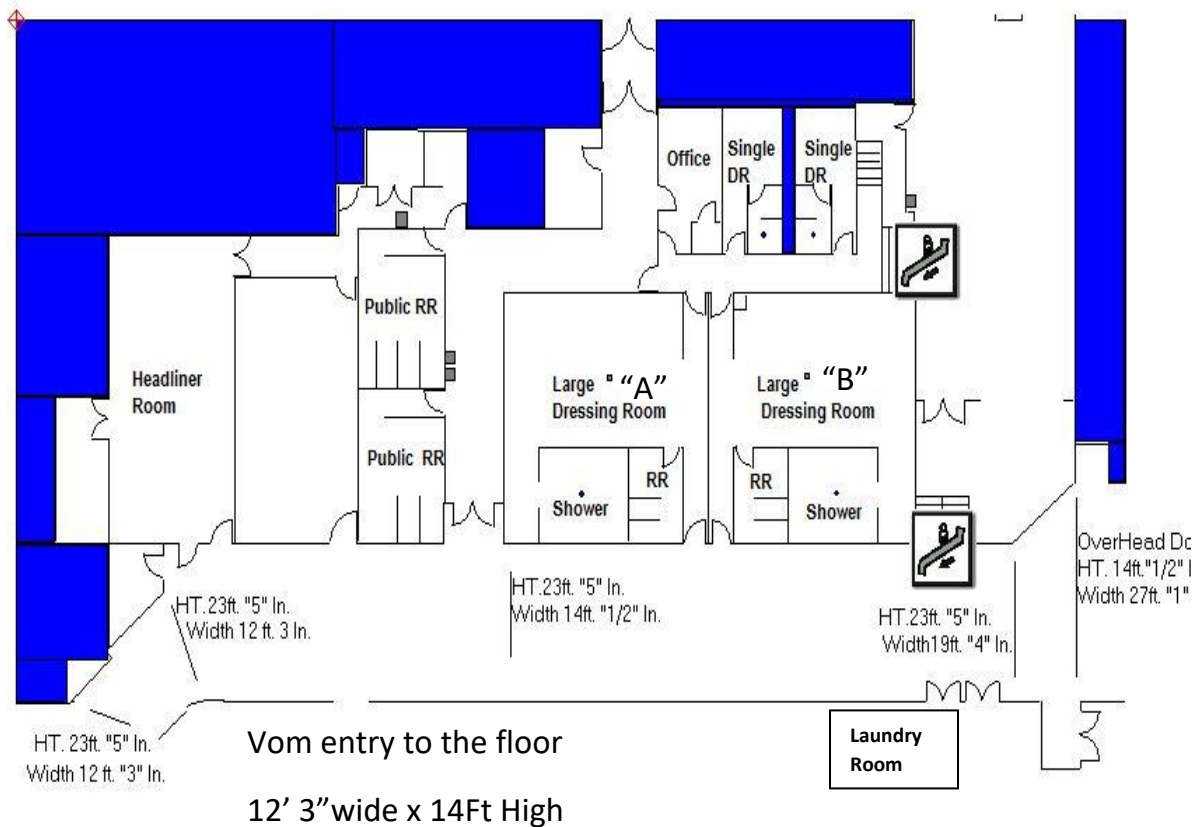
(4) Yamaha dual 18-inch subs

THIS SPACE  
INTENTIONALLY  
LEFT BLANK

## **Dressing Rooms**

The Civic Center Coliseum has two (2) large dressing room areas and two (2) smaller single dressing rooms. All dressing rooms come equipped with toilets, lavatories, and shower facilities. All dressing rooms are equipped with one (1) television monitor for viewing the Coliseum show floor, or local basic cable.

The lower dressing room area also has a small production office, which can also be used as a quick-change room, and a larger Headliner Room available for various uses. Below you will see a diagram showing the area layout and the hallway that runs from the loading doors to the Coliseum Floor.



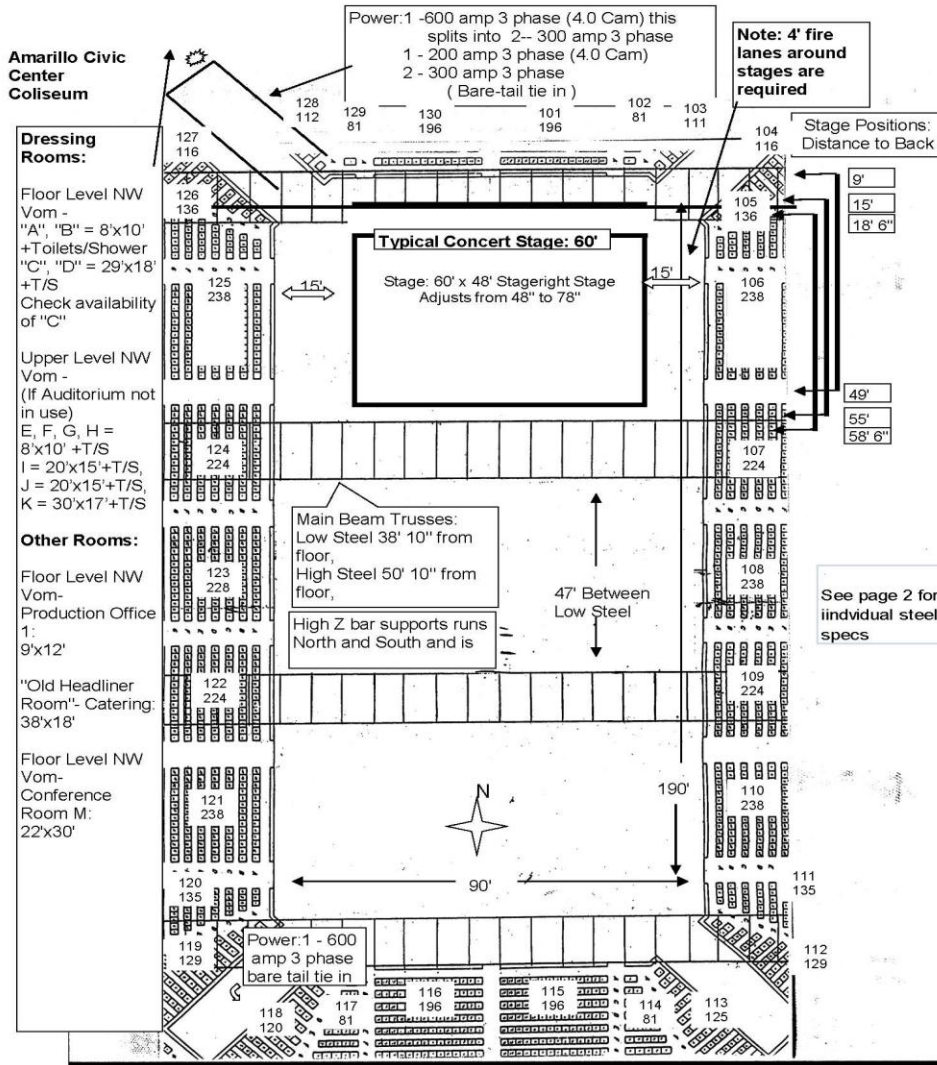
### **PRODUCTION DEPARTMENT CONTACT INFORMATION:**

Derek Hisek  
Production Manager  
O: 806-378-3088/C:605-695-6179  
[Derek.Hisek@amarillo.gov](mailto:Derek.Hisek@amarillo.gov)

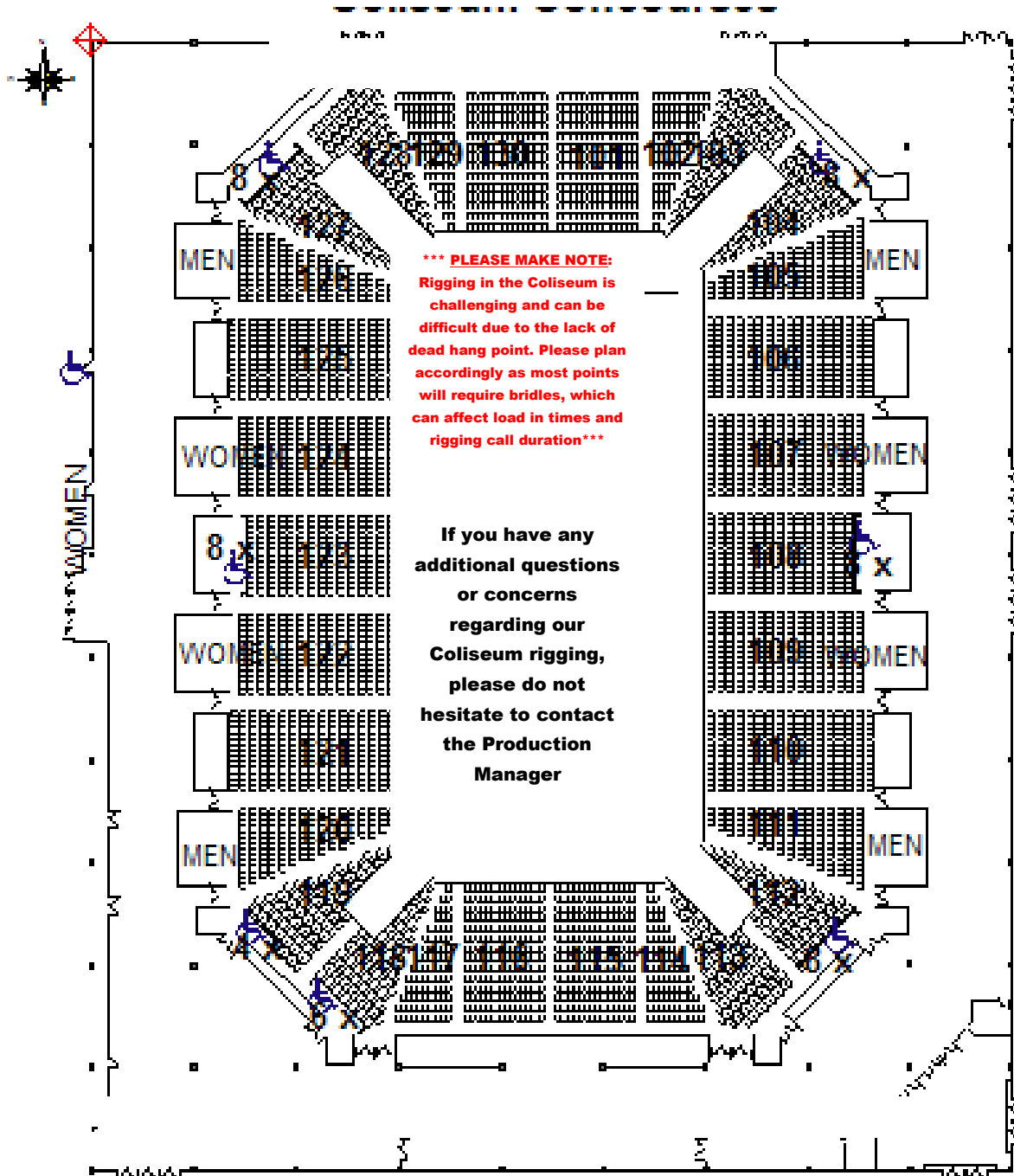
Maya Weatherholt  
1<sup>st</sup> Asst. Production Manager  
O:806-378-9346  
[Maya.weatherholt@amarillo.gov](mailto:Maya.weatherholt@amarillo.gov)

Kaleb Chamblee  
2<sup>nd</sup> Asst. Production Manager  
O: 806-378-4211  
[Kaleb.chamblee@amarillo.gov](mailto:Kaleb.chamblee@amarillo.gov)

**\*\*\* PLEASE MAKE NOTE: Rigging in the Coliseum is challenging and can be difficult due to the lack of dead hang point. Please plan accordingly as most points will require bridles, which can affect load in times and rigging call duration\*\*\***



**\*\*\* PLEASE MAKE NOTE: Rigging in the Coliseum is challenging and can be difficult due to the lack of dead hang point. Please plan accordingly as most points will require bridles, which can affect load in times and rigging call duration\*\*\***



**4,820 permanent - 50 H/C Seating - 2,192 GA**